



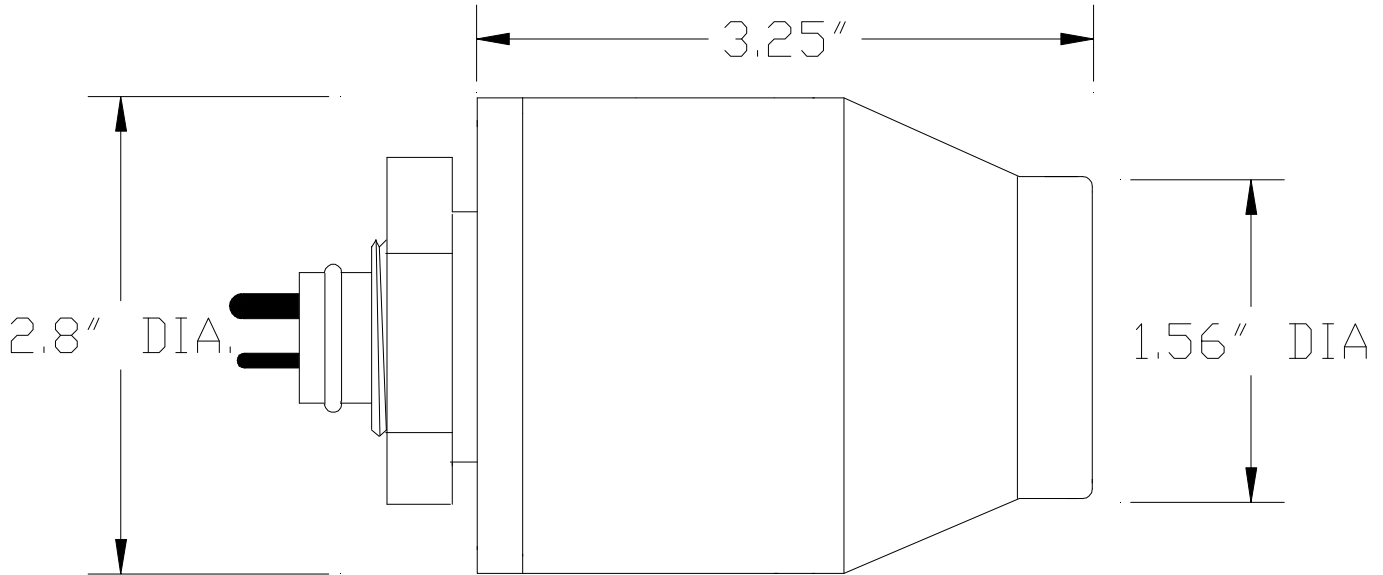
**OUTLAND
TECHNOLOGY
INC.**

MINI CAMERAS MODEL UWC-350,375 & 400

0010597d

HELMET MOUNTABLE UNDERWATER COLOR
AND BLACK & WHITE VIDEO CAMERAS

July.98



USES INCLUDE: HELMET MOUNT, MANIPULATOR ARM, HAND-HELD, DROP CAMERA, ETC.

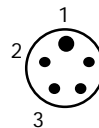
MODEL#	UWC-350 (BLACK & WHITE)	UWC-375 (BLACK & WHITE)	UWC-400 (COLOR)
Image Device	1/2" CCD Sensor 510 H x 492 V, Pixels.	1/3" CCD Sensor 510 H x 492 V, Pixels.	1/3" CCD Sensor 512 H x 492 V Pixels.
Sensitivity	.015 lux	.5 lux	2.5 lux
Resolution	500 Horz. lines.	380 Horz. lines	330 Horz. lines
PWR (12-24 VDC)	@ 180 ma.	@ 120 ma.	@ 200 ma.
Lens	A-Iris, 5.0mm F1.4	E-Iris, 3.8mm F2	E-Iris, 4.2mm, F1.9

MECHANICAL:

Length..... 3.25 in. (81mm)
(excluding connector).
Diameter..... 2.8 in. (70mm)
Weight..... Dry 30 oz. (.85kg)
Wet 20 oz. (.57kg)
Depth Rating..... 3300 ft. (1000 m)
Housing..... Stainless Steel

CONNECTOR:

Standard Connector..... XSK-5-BCL
(Mate is RMK-5-FS)



- 1. Video (White)
- 2. Ground/Common (Black)
- 3. +12-24 VDC (Green)

OPTIONS:

- 1. CCIR (PAL) Format
- 2. Customer specified connector
- 3. 3000 meter housing